



HOTEL
BEACONSFIELD
BROOKLINE, MASSACHUSETTS

The
BEACONSFIELD



GILMAN M. LOUGEE
Manager

BROOKLINE
BOSTON
Massachusetts



The Main Entrance



YOUR visit to Boston may be made interesting and comfortable. It may be a short stay or an extended one. It may be for rest and quiet. In fact, you may come to this quaint and beautiful city for any number of reasons but it matters not the purpose for which you journey here; you will find interest, comfort, rest and quiet waiting for you at the Hotel Beaconsfield, Boston's exclusive suburban transient and residential hotel.

The location of the Beaconsfield recommends it so admirably to those who dislike the clatter and rush of a busy city. While it is quite beyond the hustling crowds of the in-town population it is close enough to make the matter of transportation to and from the city very simple indeed. Whether you prefer to go by motor, street railway or by taxi you are in the center of Boston's shopping and business districts within twenty minutes from the time you leave the comfort of your room.

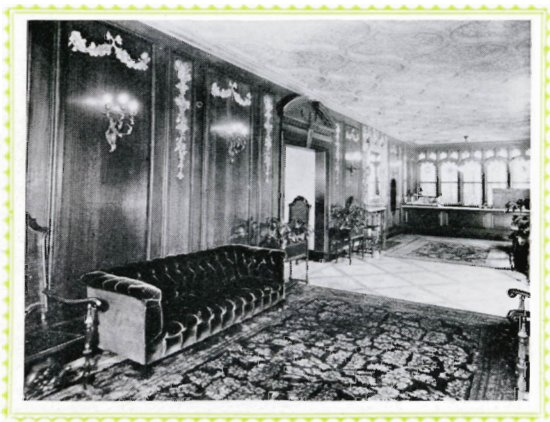
The Beaconsfield offers so much to the visitor. Its beautifully appointed first floor

with spacious lounging and reception rooms, its excellent cuisine, its delightful rooms and suites and its many other accommodations have all been designed with the idea of refined comfort uppermost in mind.

The hotel occupies a large tract of land in the exclusive Brookline section of Boston. The grounds are beautifully landscaped for the pleasure of guests. Within the hotel grounds is a thoroughly modern garage owned and operated by the hotel and capable of accommodating over two hundred cars.

The hotel fronts on Beacon Boulevard, famous throughout the world for its exclusiveness, its beautiful homes and Colonial charm. There are many means of transportation to and from town and the few minutes consumed in the ride are agreeably spent. For those who prefer to use the train there is the Beaconsfield station on the hotel premises. At the Beaconsfield you will find the real spirit of New England hospitality. We take great pride in our hotel not only for itself and what it has to offer but for the personality given it by its many guests.





The Foyer

The foyer is indeed a beautiful introduction to the Beaconsfield. It was adapted from Belton House in England which was designed in 1689 by the famous Sir Christopher Wrenn.





The Lounge

You will find that the Beaconsfield has endeavored to depart from the general conception of a hotel. We have endeavored to provide our guests with an atmosphere far from the standardized rules of hotel decoration. Perhaps that is why the Beaconsfield is such a delightful place to stop.





The Lounge

The lounge is a delightful room offering subdued comfort and quiet for those who prefer refined environment. During the day the lounge is flooded with sunshine and in the evening the softness of lamplight and restfulness of generous furniture invite reading.





The Beaconsfield fronts on beautiful and charming Beacon Boulevard in fashionable Brookline, one of America's wealthiest suburban towns. The building is of the Georgian period. It was suggested by the facade of Stoneleigh Abbey in Kenilworth, England.

The entrance is flanked by spacious piazzas which are surrounded by Japanese box trees, blue spruce and rhododendrons tastefully distributed. This inviting approach suggests the dignity of the interior.





The Gold Parlor

The atmosphere of luxury which is so noticeable throughout the hotel is particularly marked in the Gold Parlor. It is in this stately room that the numerous Beaconsfield weddings have taken place.





The Reception Room

The reception room is devoted almost exclusively to the ladies. The decoration lends itself to a quiet chat with your friends or a restful half hour with yourself.





The Smoking Room

This delightfully informal room is just off the lobby. In deep recessed chairs you will be inclined to linger before the open grate either in friendly conversation or alone with your book or magazine.





The Dining Room

The dining room is the Beaconsfield's newest addition. While it is spacious enough to accommodate a great many it has a quiet dignity. It is done in sixteenth century Italian design most of which was applied by the hand of a well known designer.





The Ballroom

It is here that the social life of the Beaconsfield centers. The ballroom is a popular place for the younger set of Boston's society. It is the scene of many private parties and wedding receptions.

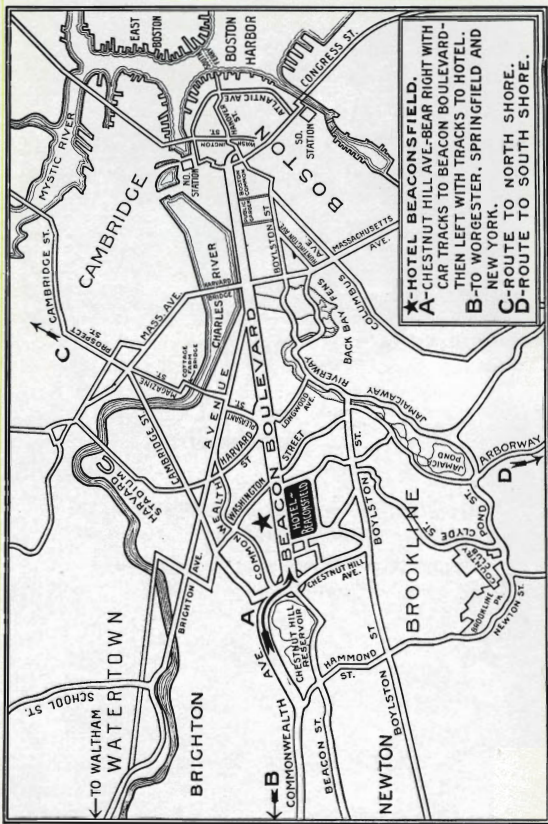




A Bedroom

This illustrates but one of the many charming chambers of the Beaconsfield. Here again you will find that nothing has been overlooked to make you comfortable.





★ HOTEL BEACONSFIELD.
A-CHESTNUT HILL AVE-BEAR RIGHT WITH CAR TRACKS TO BEACON BOULEVARD- THEN LEFT WITH TRACKS TO HOTEL.
B-TO WORGESTER, SPRINGFIELD AND NEW YORK.
C-ROUTE TO NORTH SHORE.
D-ROUTE TO SOUTH SHORE.

← TO WALTHAM SCHOOL ST.

C

← B

D